

ENVIRONMENTAL SERVICES DEPARTMENT

Greater El Paso Landfill

Key Information

Operating Hours: 7 AM-4 PM,
Monday—Saturday

Closed: New Years Day,
Martin Luther King Day,
Memorial Day, July 4th, Labor
Day, Thanksgiving, and
Christmas Day

Fees: \$26/ton with a minimum
\$16 charge; additional fees for
tires, dead animals, unsecured
loads, refrigerant removal and
special handling

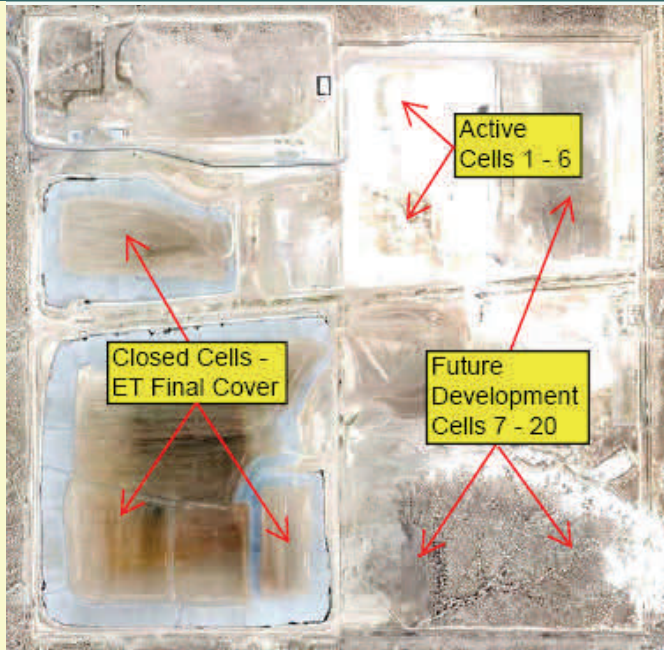
No charge for scrap metal and
recyclable materials (cardboard,
paper, plastics 1 - 7, tin and
aluminum cans), used oil, oil
filters, auto batteries and
antifreeze—must be separated
and placed in designated area.



ENVIRONMENTAL
SERVICES DEPARTMENT

Greater El Paso Landfill
2300 Darrington Road
Clint, Texas 79928

Phone: 915-851-3194
Fax: 915-851-4562



Description

The Greater El Paso Landfill is an active Type I Municipal Solid Waste (MSW) landfill owned and operated by the City of El Paso. The landfill is located in southeast El Paso County approximately 26 miles from downtown El Paso and immediately east of IH-10 at Darrington Road.

The landfill includes 2 separate permitted areas (Permits 2284 and 1482), which consist of approximately 311 acres and 286 acres, respectively. The “older” (1482) permitted area began receiving waste from 1983—2007 and is currently

pending final closure. The recently permitted 2284 area began operating in 2005 and consists of existing cells 1—6 and future cells 7—20. Each day, approximately 1,500 tons of MSW is disposed of at the landfill from the City’s residential garbage collection operations, private haulers, surrounding communities, and the general public. Current projections estimate currently permitted cells will be filled in 2030.

Design Features for Environmental Protection

The Greater El Paso Landfill facility includes modern design and operational features to ensure that the landfill is developed and operated in an environmental sound manner and meets all State regulations. These environmental controls include:

- A state-of-the-art, **liner system** made up of multiple impermeable barriers (geosynthetic clay liner and geomembrane liner) is installed below all active landfill cells. The liner contains the waste and prevents it from impacting the surrounding environment.
- Leachate is collected by a **leachate collection system** and disposed of in a recently constructed on-site **leachate evaporation pond**, eliminating the need to transport and treat leachate at an off-site wastewater treatment plan.
- Perimeter **landfill gas monitoring probes** and on-site structures are monitored quarterly to ensure landfill gas is not migrating from the landfill.
- Groundwater is located around 370 feet below ground surface at the active cells. **Groundwater monitoring wells** are installed around the landfill perimeter and monitored semi-annually to ensure groundwater protection.
- The “older” landfill area has been closed with an **evapotranspiration (ET) final cover**, which consists of multiple soil layers and a vegetative covering of native plants. The system is designed to minimize infiltration of stormwater runoff into underlying waste. This cover system is one of the first of its kind to be approved in Texas.

City of
El Paso