

Map Change Viewer – El Paso County, Texas

How to use the Interactive Viewer

The Federal Emergency Management Agency (FEMA), in coordination with community officials throughout El Paso County, Texas have worked together to update the flood hazard information for the areas within the County. Since 2016, FEMA has been coordinating with community and technical officials, levee owners, State and Federal partners to analyze, assess and define flood prone areas within the County. The results of the study effort were released as preliminary Flood Insurance Rate Maps (FIRM) on July 8, 2020.

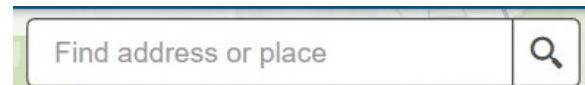
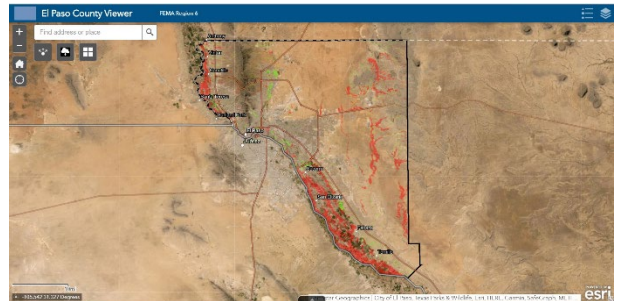
Preliminary data is available for review and guidance purposes and cannot be used to rate insurance policies or determine mandatory flood insurance purchase requirements until they have been issued effective. To support community and public review of the revisions, FEMA compiled the historic (October 1982 through December 2019) and preliminary (July 2020) FIRM information in an interactive web map. This tool also includes a change layer allowing users to determine where flood hazards have increased (**red**) and decreased (**green**) with a click.

How can I look at the flood hazard information in my area?

An interactive tool is available at: http://bit.ly/EP_ChangeViewer. The tool functions best in Mozilla Firefox, Google Chrome or Apple Safari browsers on any computer. Follow the steps below to review flood changes in your area.

Step 1. To launch the interactive tool, enter http://bit.ly/EP_ChangeViewer into your browser. Users will be greeted with a disclaimer window. Click **OK**. The default view is the Comparison Layer.

Step 2. At the top left-hand corner of the viewer, users can enter a location, address or latitude/longitude point and the viewer will zoom to your location of interest.



Once the tool identifies the address or location entered by the user, it will load the preliminary flood hazard information. If the address pin (black dot) is in a **red** or **green** shaded area, the property address is included in an area where the flood data has been updated/changed.

Step 3. Please take a moment to select the Preliminary data set from the layer list to review your property once more. If the property is located within a teal polygon, the property is located in a high-risk flood hazard area. If the property address is located in a grey shaded area, the flood risk is moderate. The layer list button also offers a chance to review the current Effective Flood Insurance Rate Map (FIRM) data too.

Other features to enhance the user experience include:



In the viewing window on the left, users can zoom in and out using the (+) and (-) buttons available.



The LEGEND (upper right of viewer) can be opened by clicking on the button shown.



To zoom out to see the entire county area, click the HOME button.



Click the Layer List button (upper right of viewer) to turn on and off the three layers.



To allow the viewer to locate you, click the compass button and make sure your device has location service enabled.



Select the best Basemap for viewing the map layers with the Basemap Gallery (upper left of viewer).