

# Comprehensive Economic Development Strategy

## Update



July 21, 2025



# AGENDA

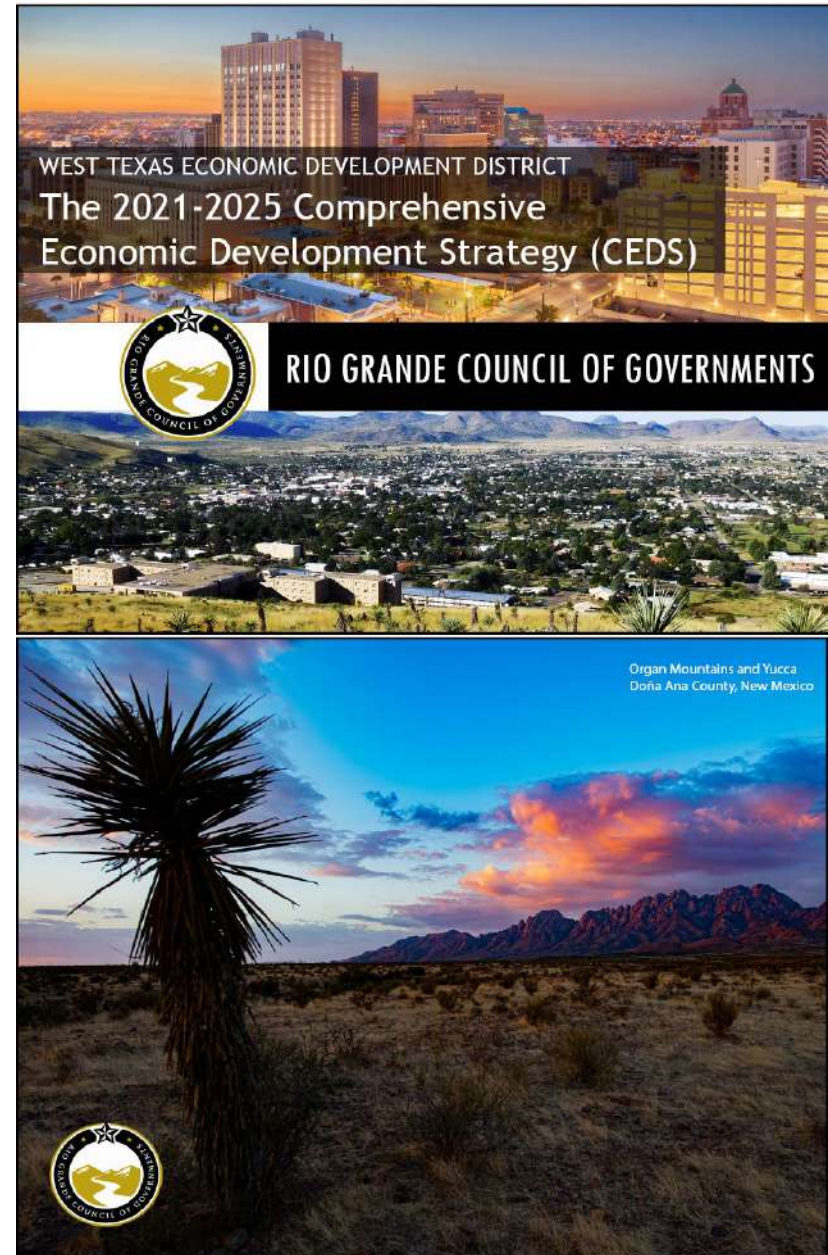
1. Purpose
2. Process & Priorities
3. Benefit Cost Analysis Methodology
4. Notable Projects
5. Next Steps

***Goal 1: Cultivate an environment conducive to strong Economic Development***



# CEDS Reminders

- Regional strategic document for economic development
- Rio Grande Council of Governments
- Every 5 years- US EDA
- EDA Grant requirement
  - Funding for Economic Development projects
  - Results oriented regional vision



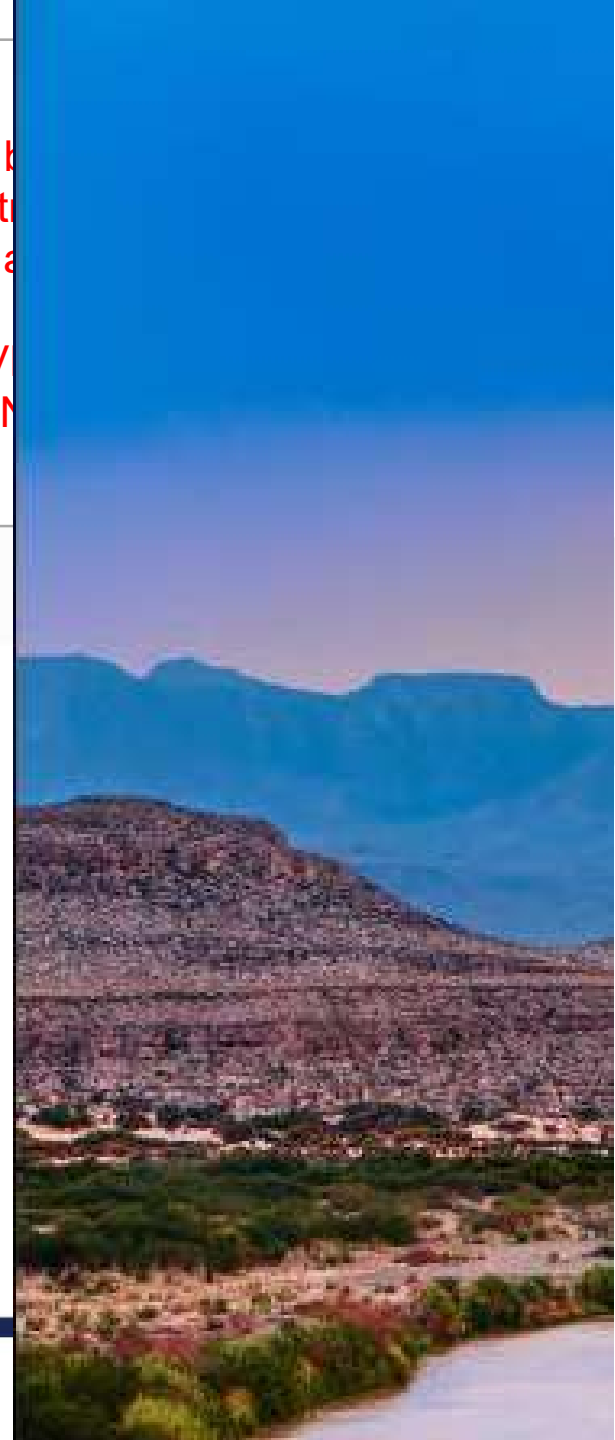
# Comprehensive Economic Development Strategy

This text block is a placeholder for the ASL text. To add a new text block, click the plus icon in the top right corner.

REMOVE  
PRESENTATION

## Prioritize Regional Projects and Programs

- Consolidate projects and programs in Council-approved planning documents and City Department CIP
- Incorporate programs serving industry development and growth
- Implement a Benefit-Cost Analysis (BCA) methodology
- Establish a growth direction for City revenue-generating assets





## Align Regional Policies and Strategies

- Serves as a mechanism to collaborate with CEDS jurisdictions and Mexico
- Align Economic Development incentives with City land strategy and programs to CEDS
- Tracks progress of regional projects, impacts, and identifies future opportunity

This text box is to remind you about the ASL translator service. Do NOT add any info in this space.

REMOVE THIS BOX ONCE THE PRESENTATION IS FINALIZED.

## Secure New Funding Sources

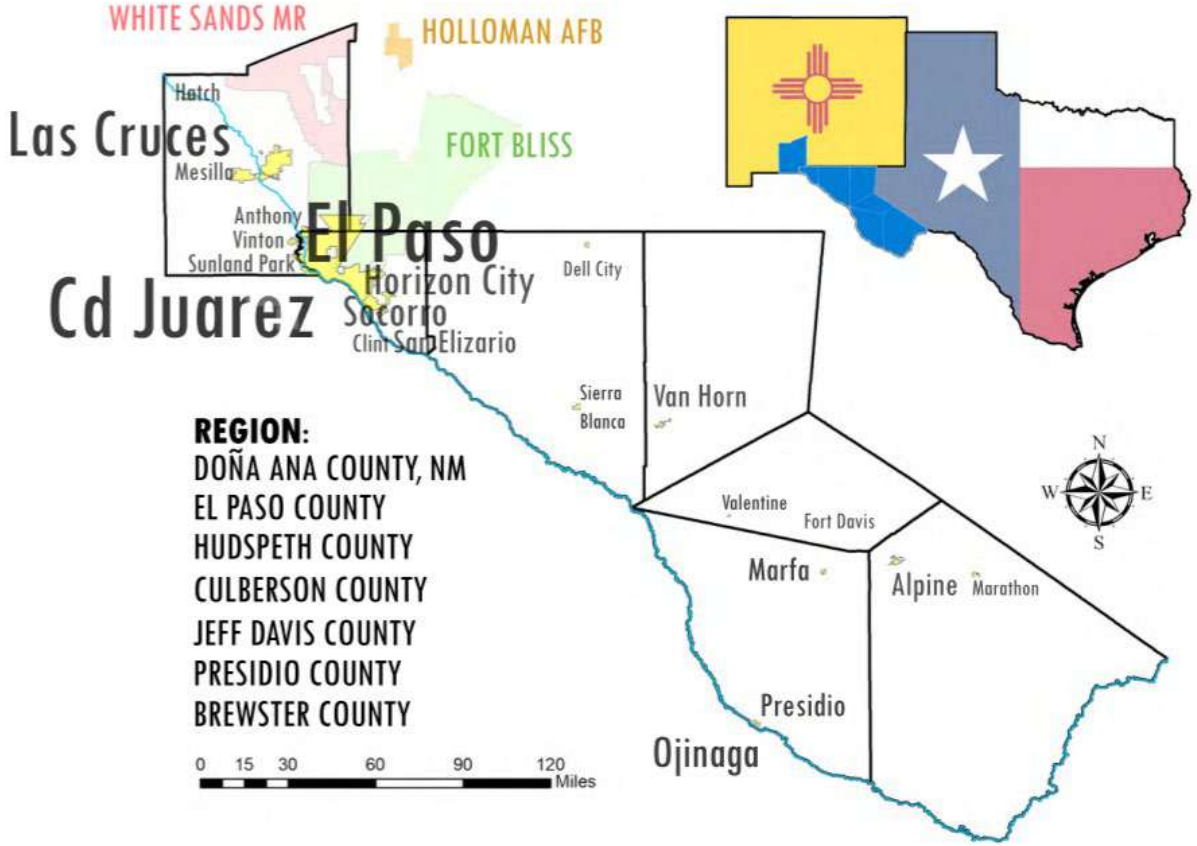
- Projects prioritized in the CEDS qualify for various state and federal funding opportunities (e.g., Build Back Better)
- Expand tax base through business retention and expansion
- Co-investment (FDI, philanthropy, private sector, partnerships)

This text box is to remind you about the ASL translator service. Do NOT add any info in this space.

**REMOVE THIS BOX ONCE THE PRESENTATION IS FINALIZED.**



# CEDS Region



This text box is to remind you about the ASL translator service. Do NOT add any info in this space.

REMOVE THIS BOX ONCE THE PRESENTATION IS FINALIZED.

### Key Partners:

- US Economic Development Administration
- Rio Grande Council of Governments
- Ciudad Juarez Municipal Government
- 50+ Private Sector participants
- 28 Governments
- EPCC, UTEP
- 30+ Non- profits

# Target Industries

- Advanced Manufacturing and Critical Supply Chains
- Aerospace and Defense
- Critical Infrastructure
- Energy and Resource Resilience
- Economic Resilience
- Small Business and Entrepreneurship



# Process & Priorities

## 65 Subcommittee members



This text box is to remind you about the ASL translator service. Do NOT add any info in this space.

**REMOVE THIS BOX ONCE THE PRESENTATION IS FINALIZED.**

- Feedback and expertise
- Project submissions
- Implementation and tracking

# Project Submission Process

**CEDS Project Intake Form**  
Economic & International Development

**Project Description \***

Provide a brief summary (2–4 sentences) describing the purpose, goals, and main activities of the project.

**Alignment with CEDS Priorities**

Which CEDS Goal(s) or Priority Area(s) Does the Project Address? \*

<input type="checkbox"/> Housing	<input type="checkbox"/> Infrastructure
<input type="checkbox"/> Economic Resilience	<input type="checkbox"/> Workforce Development
<input type="checkbox"/> Energy Resilience	<input type="checkbox"/> Funding Implementation
<input type="checkbox"/> Technology	<input type="checkbox"/> Small Business and Entrepreneurship
<input type="checkbox"/> Culture and Heritage	

**Geographic Area/Region Impacted \***

Indicate the primary city, county, or region the project will serve.

[GovOS: CEDS Project Intake Form](#)

## Project Eligibility

- ✓ Project must align with CEDS priorities
- ✓ Basic project information (project title, sponsor, description)
- ✓ Cost estimate
- ✓ Geographic area impacted
- ✓ Expected objectives and outcomes

## Project Readiness Categories

Economic Development Projects (EDP)

Economic Development Strategies (EDS)

This text box is to remind you about the ASL translator service. Do NOT add any info in this space.

REMOVE THIS BOX ONCE THE PRESENTATION IS FINALIZED.



# Project Prioritization via Benefit-Cost Analysis (BCA)

This text box is to remind you about the ASL translator service. Do NOT add any info in this space.

REMOVE THIS BOX ONCE THE PRESENTATION IS FINALIZED.

## Economic Development Projects (EDP)

- Projects with completed engineering design and feasibility studies
- Shovel-ready projects with stakeholder input
- Projects ready for funding implementation (grants, appropriations, TED Fund)

## Project Sponsors

- Project sponsors (government, nonprofit, private sector agencies) will submit EDP and EDS
- All EDP and EDS require a project sponsor
- **CEDS process will NOT include a BCA for EDS**

# Prioritization Process

1

Analyze new projects submitted weekly

2

Classify into EDP and EDS

3

**All EDP are ranked** through the BCA Methodology.  
EDS are indexed and added to the document

4

Neutral 3<sup>rd</sup> party assessment



# Benefit Cost Analysis (BCA) Methodology

This text box is to remind you about the ASL translator service. Do NOT add any info in this space.

REMOVE THIS BOX ONCE THE PRESENTATION IS FINALIZED.

## Project Ranking Criteria:

↓ ↑	<b>Project Readiness:</b>	Design, right of way/facilities, funding availability, defined implementation timeline
↓ ↑	<b>Private Investment:</b>	Amount (\$USD) committed to the project
↓ ↑	<b>Jobs:</b>	Direct, indirect and induced FTE (weighed by wages)
↓ ↑	<b>Revenue Generated:</b>	Amount (\$USD) in revenue generated by project for project sponsor
↓ ↑	<b>Project Sponsor Capacity:</b>	Project cost ratio (\$USD) in relation to project sponsor budget
↓ ↑	<b>External Funding:</b>	Amount (\$USD) grants, philanthropy, public-private partnerships
↓ ↑	<b>Economic Impact:</b>	(\$USD), Study completed, creates resilience
↓ ↑	<b>Local Public Funding:</b>	Amount (\$USD) from local tax payers
↓ ↑	<b>Other External Factors:</b>	Political environment, public support, alignment to Federal priorities, social benefits



# Advanced Manufacturing District

This text box is to remind you about the ASL translator service. Do NOT add any info in this space.

REMOVE THIS BOX ONCE THE PRESENTATION IS FINALIZED.

- ↑ **Project Readiness:** Design, right of way/facilities, funding availability, defined implementation timeline
- ↓ ↑ **Private Investment:** \$0 USD committed to the project
- ↓ ↑ **Jobs:** 73 Direct, 400+ indirect and TBD induced (Technicians)
- ↓ ↑ **Revenue Generated:** (\$ TBD USD) in leases
- ↑ **Project Sponsor Capacity:** Project cost (\$60M USD) in relation to City budget ( $\$60M/1.4B=0.042$ ) <0.05
- ↓ ↑ **External Funding:** Amount (40 \$USD) grants, philanthropy, public-private partnerships
- ↑ **Economic Impact:** (\$USD), Study completed, creates resilience
- ↓ ↑ **Local Public Funding:** (\$6M USD) from local tax payers
- ↓ ↑ **Other External Factors:** Political environment, public support, alignment to Federal Priorities,

# Benefit Cost Analysis (BCA) Methodology

This text box is to remind you about the ASL translator service. Do NOT add any info in this space.

REMOVE THIS BOX ONCE THE PRESENTATION IS FINALIZED.

## Project Ranking Criteria: Project Sponsor Capacity Ratio

Ratio	Risk level	Interpretation
<0.05	Low	Well within sponsor's capacity. Likely manageable even without major external funding
0.05 – 0.10	Moderate	Acceptable if there's clear external funding or demonstrated execution history.
0.10 – 0.20	Elevated	Should be scrutinized for feasibility, match funding, and contingency planning.
> 0.20	High	Likely unsustainable without heavy outside funding. Could stress sponsor's resources or operations.

# Notable Submitted Projects

7/1/2025

1. Ysleta-Zaragoza Port of Entry Modernization
2. Advanced Manufacturing District
3. International Project: Libramiento Ferroviario (Ciudad Juarez and NMBA)

+60 Additional project submissions

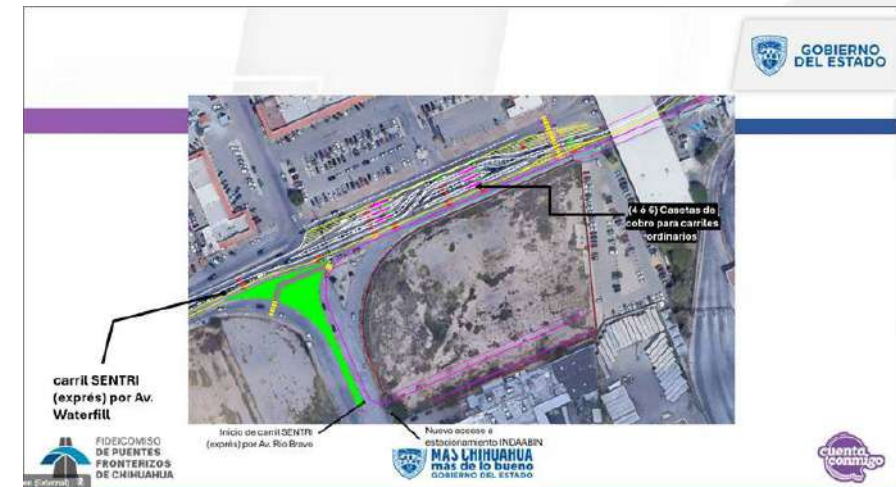
+8 Ciudad Juarez project submissions

- Integrated Council-approved planning documents including CID CIP, Airport CIP, International Bridges CIP, and others

This text box is to remind you about the ASL translator service. Do NOT add any info in this space.

REMOVE THIS BOX ONCE THE PRESENTATION IS FINALIZED.

Proposed Ysleta-Zaragoza Port improvements by State of Chihuahua



# Next Steps

- Next Steering Committee Meeting: August
- Public outreach: Summer and Fall 2025
- Projects submissions deadline for final ranking: September
- **CEDS Document Publication: October 2025**
  - Public comment period: October 2025
- **CEDS final document approval by City Council: November 2025**
- **CEDS Submission to EDA: December 2025**

This text box is to remind you about the ASL translator service. Do NOT add any info in this space.

**REMOVE THIS BOX ONCE THE PRESENTATION IS FINALIZED.**

## MISSION



Deliver exceptional services to support a high quality of life and place for our community.

## VISION



Develop a vibrant regional economy, safe and beautiful neighborhoods and exceptional recreational, cultural and educational opportunities powered by a high performing government.



## VALUES

Integrity, **R**espect, **E**xcellence,  
**A**ccountability, **P**eople

This text box is to remind you about the ASL translator service. Do NOT add any info in this space.

**REMOVE THIS BOX ONCE THE PRESENTATION IS FINALIZED.**

## MISIÓN



Brindar servicios excepcionales para respaldar una vida y un lugar de alta calidad para nuestra comunidad

## VISIÓN



Desarrollar una economía regional vibrante, vecindarios seguros y hermosos y oportunidades recreativas, culturales y educativas excepcionales impulsadas por un gobierno de alto desempeño



## VALORES

Integridad, Respeto, Excelencia,  
Responsabilidad, Personas

This text box is to remind you about the ASL translator service. Do NOT add any info in this space.

REMOVE THIS BOX ONCE THE PRESENTATION IS FINALIZED.