



Capital Improvement Department

Mayor
Dee Margo

City Council

District 1
Peter Svarzbein

District 2
Alexsandra Annello

District 3
Cassandra Hernandez

District 4
Dr. Sam Morgan

District 5
Dr. Michiel R. Noe

District 6
Claudia Ordaz Perez

District 7
Henry Rivera

District 8
Cissy Lizarraga

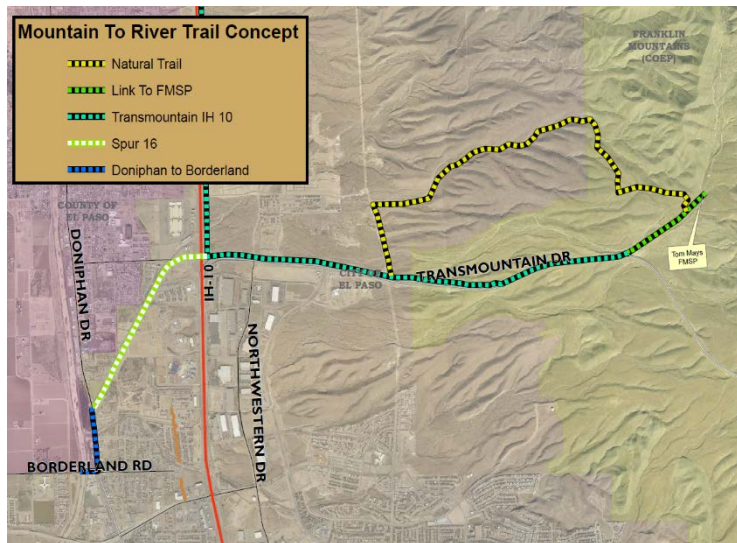
City Manager
Tommy Gonzalez

COMMUNITY MEETING THURSDAY, JANUARY 17, 2019 CAFETERIA OF CANUTILLO HIGH SCHOOL 6675 SOUTH DESERT BLVD 6:00 PM

The City of El Paso's Capital Improvement Department in conjunction with the Office of City Representative Peter Svarzbein, District 1, has scheduled an open house community meeting to inform the public about the Mountain to River Trail project.

The project will include a continuous trail from **Tom Mays Park** to the **Rio Grande Trail**, and will include the following amenities:

- Construction of an approximate two and a half (2.5) mile segment of a low impact natural surface trail pathway
- Provide connectivity to surrounding existing trails/paths
- Construction of a Trailhead (with parking, trail information, and basic amenities).
- Installation of wayfinding signage.



This project with an approximate budget of \$877,000 is funded by the 2012 Quality of Life Bond Program, and is part of the of the City of El Paso's commitment to enhance our City's quality of life through the creation of recreational, cultural and educational environments.

FOR MORE INFORMATION

DANIEL LOPEZ
PROJECT MANAGER
(915) 212-1849

LOPEZDP@ELPASOTEXAS.GOV

SPANISH TRANSLATION SERVICES, SIGN LANGUAGE INTERPRETERS, ADA ACCESSIBILITY AND OTHER REASONABLE ACCOMMODATIONS ARE AVAILABLE UPON REQUEST, IF MADE A MINIMUM OF TWO WORKING DAYS PRIOR TO THIS MEETING BY CALLING (915) 212-1079.

SERVICIOS DE TRADUCCIÓN AL ESPAÑOL SERÁN PROPORCIONADOS, PREVIA SOLICITUD - SI ES QUE SON ORDENADOS CON UN MÍNIMO DE DOS DÍAS HÁBILES COMUNICÁNDOSE CON EL (915) 212-1079.

Sam Rodriguez, P.E., CM, CFM, CNU-A – City Engineer
City 2 | 218 N. Campbell, 2nd Floor | El Paso, Texas 79901 | (915) 212-0065