

JOHN COOK
MAYOR



JOYCE WILSON
CITY MANAGER

YOLANDA ALAMEDA
DEPARTMENT HEAD

CITY COUNCIL

ANN MORGAN LILLY, DISTRICT 1
SUSANNAH M. BYRD, DISTRICT 2
J. ALEXANDRO LOZANO, DISTRICT 3
MELINA CASTRO, DISTRICT 4
RACHEL QUINTANA, DISTRICT 5
EDDIE HOLGUIN JR., DISTRICT 6
STEVE ORTEGA, DISTRICT 7
BETO O'ROURKE, DISTRICT 8

Museums and Cultural Affairs Department **Press Release**

Announcing Six Exhibitions Featuring Glass and Textiles At El Paso City Museums, and the Stanlee and Gerald Rubin Center for the Visual Arts, UTEP March 7, 2008 – August 2, 2008

For Immediate Release: January 10, 2008
Contact: Victor Guerrero, Marketing and Communications Assistant,
Museum and Cultural Affairs Department, (915) 541-4481

***Wrapped in Tradition: The Chihuly Collection of American Indian Trade Blankets* at the El Paso Museum of Art March 9, 2008 – May 18, 2008**

Dale Chihuly was inspired early in his career by the color and design of 19th century, Native American trade-blankets as the basis for his "Navajo Blanket Cylinders." Exhibited together, Chihuly's 15 exquisite hand-blown glass vessels and 80 historic Navajo blankets are a tribute to the artistic accomplishments of earlier Native American artists and an artist who has changed glass from a craft medium to a world-class fine art. This exhibition is organized by the Dale Chihuly Studio in cooperation with the Oregon Historical Society.

Biography

Dale Chihuly is most frequently lauded for revolutionizing the Studio Glass movement by expanding its original premise of the solitary artist working in a studio environment to encompass the notion of collaborative teams and a division of labor within the creative process. However, Chihuly's contribution extends well beyond the boundaries both of this movement and even the field of glass: his achievements have influenced contemporary art in general. Chihuly's practice of using teams has led to the development of complex, multipart sculptures of dramatic beauty that place him in the leadership role of moving blown glass out of the confines of the small, precious object and into the realm of large-scale contemporary sculpture. In fact, Chihuly deserves credit for establishing the blown

glass form as an accepted vehicle for installation and environmental art beginning in the late twentieth century and continuing today.

A prodigiously prolific artist whose work balances content with an investigation of the material's properties of translucency and transparency, Chihuly began working with glass at a time when reverence for the medium and for technique was paramount. A student of interior design and architecture in the early 1960s, by 1965 he had become captivated by the process of glassblowing. He enrolled in the University of Wisconsin's hot glass program, the first of its kind in the United States, established by Studio Glass movement founder Harvey K. Littleton. After receiving a degree in sculpture, Chihuly was admitted to the ceramics program at the Rhode Island School of Design, only to establish its renowned glass program, turning out a generation of recognized artists.

Influenced by an environment that fostered the blurring of boundaries separating all the arts, as early as 1967 Chihuly was using neon, argon, and blown glass forms to create room-sized installations of organic, freestanding, plantlike imagery. He brought this interdisciplinary approach to the arts to the legendary Pilchuck School in Stanwood, Washington, which he co founded in 1971 and served as its first artistic director until 1989. Under Chihuly's guidance, Pilchuck has become a gathering place for international artists with diverse backgrounds. Over the years his studios, which include an old racing shell factory in Seattle called The Boathouse and now buildings in the Ballard section of the city and Tacoma, have become a mecca for artists, collectors, and museum professionals involved in all media.

Stylistically over the past forty years, Chihuly's sculptures in glass have explored color, line, and assemblage. Although his work ranges from the single vessel to indoor/outdoor site-specific installations, he is best known for his multipart blown compositions. These works fall into the categories of mini-environments designed for the tabletop as well as large, often serialized forms that are innovatively displayed in groupings on a wide variety of surfaces ranging from pedestals to bodies of natural water. Masses of these blown forms also have been affixed to specially engineered structures that dominate large exterior or interior spaces.

Over the years Chihuly and his teams have created a wide vocabulary of blown forms, revisiting and refining earlier shapes while at the same time creating exciting new elements, such as his Fiori, all of which demonstrate mastery and understanding of glassblowing techniques. Earlier forms, such as the Baskets, Seaforms, Ikebana, Venetians, and

Chandeliers, from the late 1970s through the 1990s have been augmented since the early to mid-1990s with new blown elements. Chihuly and his teams primarily developed these while working in glass factories in France, Finland, Ireland, and Mexico. The resulting Reeds, Saguaros, Herons, Belugas, Seal Pups, and other forms are now juxtaposed with the earlier series, including Macchia, Niijima Floats, and Persians in lively new contexts.

Since the early 1980s, all of Chihuly's work has been marked by intense, vibrant color and by subtle linear decoration. At first he achieved patterns by fusing into the surface of his vessels "drawings" composed of prearranged glass threads; he then had his forms blown in optic molds, which created ribbed motifs. He also explored in the Macchia series bold, colorful lip wraps that contrasted sharply with the brilliant colors of his vessels. Finally, beginning with the Venetians of the early 1990s, elongated, linear blown forms, a product of the glassblowing process, have become part of his vocabulary, resulting in highly baroque, writhing elements. In recent years Chihuly has experimented with Polyvitro to create new interpretations of some of his glass forms.

Chihuly's work is strongly autobiographical. His fascination with abstracted flower forms, for him, reminiscent of his mother's garden in Tacoma, has been discussed in depth in the literature. Likewise, series such as his Seaforms, Niijima Floats, the Chandeliers, and more recently, the Boats allude to his childhood in Tacoma, Washington, marked by his love of the sea and his recognition of its importance to the economy of the Pacific Northwest. Even in the few instances in which the artist has chosen to respond to earlier historical decorative arts forms, the imagery has personal significance. The Basket series, for instance, developed out of the woven Northwest Coast Indian baskets that Chihuly saw in 1977 with his late friend the sculptor Italo Scanga and sculptor James Carpenter at the Tacoma Historical Society.

Over the years the artist has created a number of memorable installation exhibitions, including Chihuly Over Venice (1995–96), Chihuly in the Light of Jerusalem 2000 at the Tower of David Museum of the History of Jerusalem (2000), Chihuly in the Park: A Garden of Glass at Chicago's Garfield Park Conservatory (2001–2), the Chihuly Bridge of Glass in Tacoma (2002), and Mille Fiori at the Tacoma Art Museum (2003). These installations confirm the artist's sensitivity to architectural context and his interest in the interplay of natural light on the glass that exploits its translucency and transparency. Recent situations have heightened this effect, since the sites that he has selected within existing buildings have been dominated by large walls of glass.

While elements of the earlier installations allude to natural phenomena such as icicles and vegetation, gardens provide the dominant theme in Chihuly's most recent ones. Sites that include Chicago's Garfield Park Conservatory (2001), the Franklin Park Conservatory in Columbus, Ohio (2003), the Atlanta Botanical Gardens (2004), the Royal Botanic Gardens Kew(2005), Fairchild Tropical Botanical Garden, Coral Gables, Florida (2006), the Missouri Botanical Garden, St. Louis (2006), and now, the New York Botanical Garden (2006) enable the artist to juxtapose monumental, organically shaped sculptural forms with beautiful landscaping, establishing a direct and immediate interaction between nature, art, and environmental light.

Moreover, Chihuly's Mille Fiori installations at the Tacoma Art Museum (2003), at Marlborough Gallery, New York (2004), and more recently at Imago Gallery, Palm Desert, California (2006) and R. Duane Reed Gallery, St. Louis (2006), reveal the artist's progression toward a logical next direction: installations that are gardens themselves. Starting as a massing of churning forms and vibrant colors, the tonality of these installations has changed to embrace a more limited, single color palette, reminiscent of the early Chandeliers. In many ways, Chihuly has come full circle; now using his mature vocabulary, he captures in these installations the joie de vivre of the plantlike forms of his early neon environments.

A dominant presence in the art world, Dale Chihuly and his work have long provoked considerable controversy as part of the art/craft debate. However, with projects such as his recent garden installations in Kew and New York, there can be little doubt that his lasting contribution to art of our times is an established fact.

SAVE THE DATE

Please join us at EPMA for a lecture about Indian trade blankets by Charles Lohrmann, on Sunday, March 9, 2008, at 2:00 pm. A reception will follow until 4:00 pm. This program is free to the public. For more information or to RSVP please call (915) 532-1707 or visit our WEB page at www.elpasoartmuseum.org

Exhibition Admission: \$5 for adults 12 and up; Free for Children 12 and under, Free on Thursday evenings from 5 pm – 9 pm, and on Sundays 12 pm – 5 pm.

Diné: People of the Navajo Nation at the El Paso Museum of Archaeology

March 8, 2008 – May 17, 2008

This exhibit includes Navajo blankets, pottery, artifacts from the museum's permanent collections, and photographs of historic and modern Navajo people.

SAVE THE DATE

Please join us at the El Paso Museum of Archaeology for an opening reception Saturday, March 8, 2008 at 2:00 p.m. For more information please call (915) 755-4332.

Bottled in the Past at the El Paso Museum of History
March 7th, 2008 (closing date to be announced)

The superiority of glass over other containers – wood, skins, and pottery – was readily apparent to prehistoric and historic consumers. Glass is chemically stable and does not transfer smell or taste from one set of contents to another. It became the ideal container for wines, perfumes and other expensive substances. As bottle making moved from individual craftsmen to the production line its use became more common.

Glass bottles are important finds at any archaeological site. A little bit of history is frozen in each piece: a shape used for a particular product, dateable changes in manufacturing techniques, and sometimes the embossed name of the business.

SAVE THE DATE

Please join us at the El Paso Museum of History on March 7, 2008 at 12:00 pm as it opens the doors to *Bottled in the Past*, an exhibit of glass which was found in El Paso at archaeological sites, the Chamizal landfill site and the shelves of long ago businesses. For more information or to RSVP please call (915) 351-3588

The El Paso Museum of History is open from 10:00 a.m. until 5:00 p.m. Tuesday through Saturday, and from noon until 5:00 p.m. on Sundays. Admission is free.

UnKnitting: Challenging Textile Traditions at the Stanlee and Gerald Rubin Center for the Visual Arts in the Rubin Gallery, the University of Texas at El Paso

April 10 – August 2, 2008

UnKnitting: Challenging Textile Traditions focuses on performative knitting practice in the creation of avant-garde, contemporary sculpture. This invitational exhibition highlights artists who are advancing and questioning established textile traditions. The artists address stereotypes of gender, ethnicity and the ideas and materials appropriate for art making. Their work upends tradition through challenges to the domestic-based, utilitarian and female-made objects that are typical of the knitted crafts.

UnKnitting artists: Adrian Esparza, United States; Rachel Gomme, United Kingdom; Mark Newport, United States; and Sandra Valenzuela, Mexico/United States. The exhibition is curated by Kate Bonansinga, Director of the Stanlee and Gerald Rubin Center for the Visual Arts and Dr. Stephanie Taylor, Professor of Modern and Contemporary Art History at New Mexico State University. Funded in part by the Texas Commission on the Arts.

Loomed Dress: Bhutanese Textiles from the Peabody Essex Museum and Other Collections at the Stanlee and Gerald Rubin Center for the Visual Arts in the "L" Gallery, the University of Texas at El Paso

April 10 – August 2, 2008

Loomed Dress presents traditional, village-based weavings from the remote Kingdom of Bhutan. These intricate textiles showcase the artistry of traditional craftspeople from one of the most isolated countries in the world. The majority of pieces in the show have been lent to the University of Texas at El Paso from the collection of the Peabody Essex Museum, which was founded in 1799 and currently houses more than 2.4 million works of art and culture. The exhibition is being held in conjunction with UTEP's annual Bhutan Days celebration. This year's celebration takes on special significance because the Smithsonian Museum's Annual Folk life Festival, the largest annual cultural event in the U.S. capital, has chosen to honor the cultures of

both the country of Bhutan and the State of Texas. Funded in part by the Texas Commission on the Arts.

The Third Lie: Chromatic Deflections, Installation by Mónica Bengoa at the Stanlee and Gerald Rubin Center for the Visual Arts, Project Space, the University of Texas at El Paso
April 10 – August 2, 2008

Chilean artist Mónica Bengoa will create a site-specific, wall-sized installation that combines text, drawing and her detailed, handcrafted embroideries. Bengoa's meticulous and theoretically complex installations have been featured internationally, including at the 52nd Venice Biennale in Venice, Italy, at the Museum of Contemporary Art in Los Angeles, CA and the 2006 ARCO International Fair of Contemporary Art in Madrid, Spain.

SAVE THE DATE

Please join us for an opening reception for all 3 exhibitions on Thursday, April 10, 2008 from 5-8 pm. Artists will be present with performances by Mark Newport throughout the evening. For more information or to RSVP please call (915) 747-6151 or visit our WEB at <http://www.utep.edu/artsculture/>

Gallery Hours: Tuesday, Wednesday, Friday 10 am – 5 pm;
Thursday 10 am – 7 pm., Saturday 12 noon – 5 pm.
Closed Sunday and Monday. All events are free and open to the public.



Newport – Unknitting
Rubin Exhibition



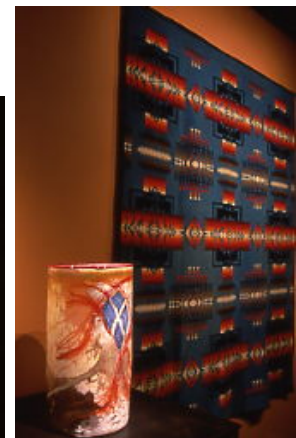
Bottle photo History Exhibition



Chihuly Glass



Chihuly Glass



Chihuly Glass



Navajo Rug Archaeology Exhibit