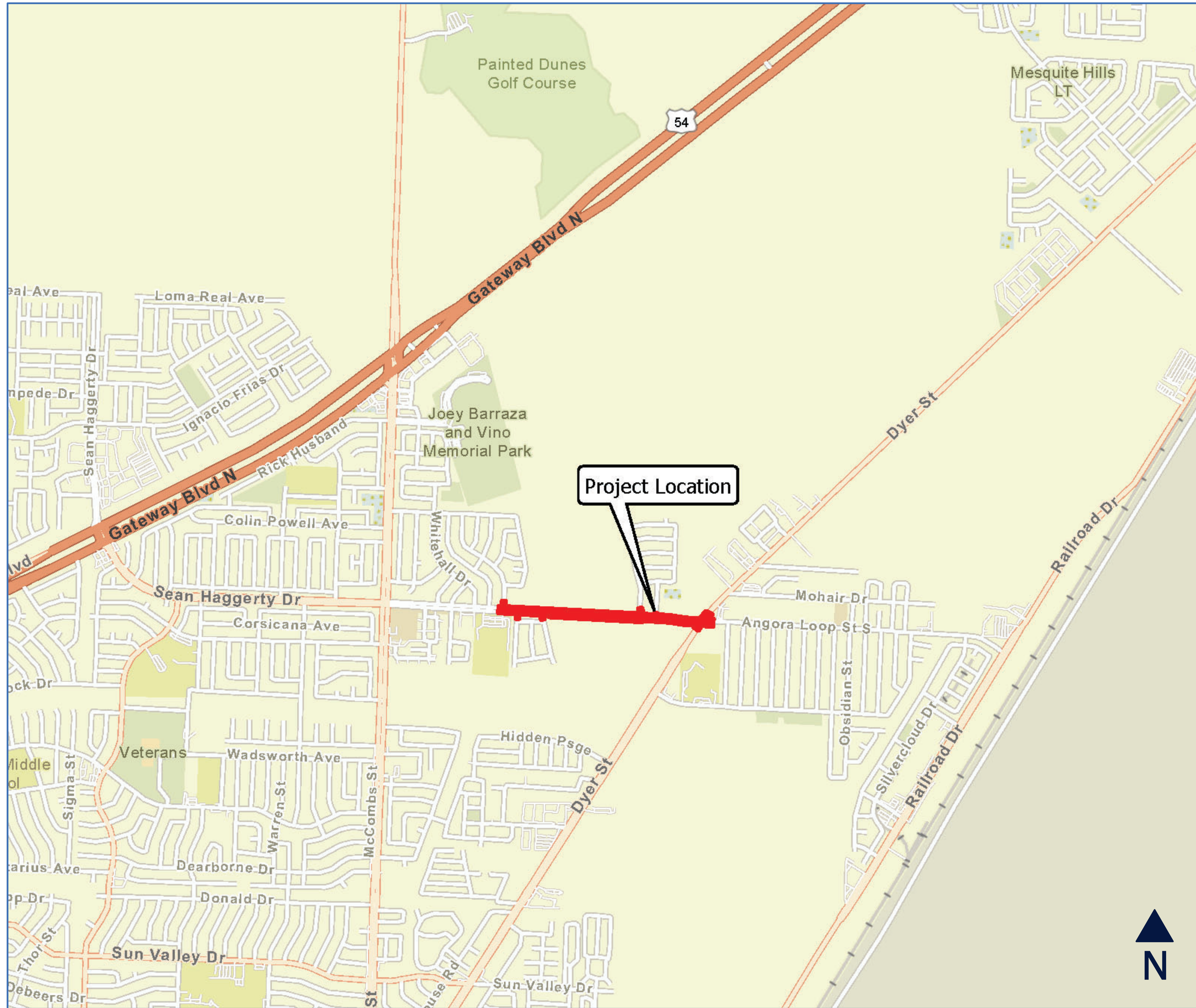


# Sean Haggerty Drive Project Area Facts



## Project Facts

### Location

City of El Paso, El Paso County

### Limits

Sean Haggerty Drive  
From Nathan Bay Drive to BU 54  
(Dyer Street).

### Corridor Length

Approx. 0.68 miles

### Existing Right-of-Way Width

120 feet (typical)

### Existing Facility

- One eastbound and one westbound travel lane from Nathan Bay Dr to west levee
- One westbound and one eastbound travel lane from Dyer St to east levee
- Dead ends at Greenbelt channel