

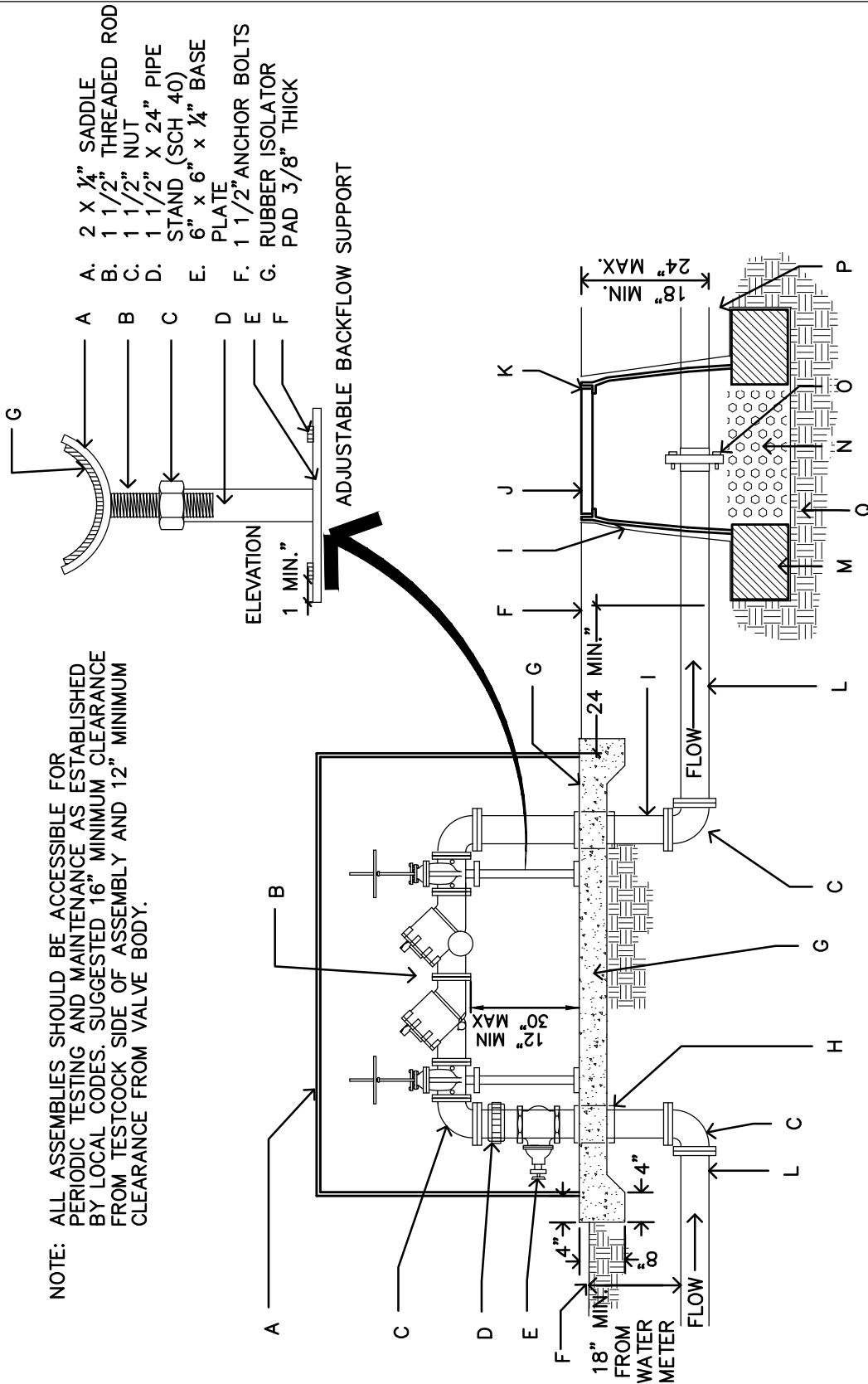


CITY OF EL PASO
PARKS & RECREATION

DETAIL NAME

REDUCED PRESSURE
BACKFLOW PREVENTER
NTS

NOTE: ALL ASSEMBLIES SHOULD BE ACCESSIBLE FOR PERIODIC TESTING AND MAINTENANCE AS ESTABLISHED BY LOCAL CODES. SUGGESTED 16" MINIMUM CLEARANCE FROM TESTCOCK SIDE OF ASSEMBLY AND 12" MINIMUM CLEARANCE FROM VALVE BODY.



- A. STAINLESS STEEL INSULATED HOT BOX ENCLOSURE R-VALVE R-25 (SEE IRRIGATION LEGEND) ASSE 1060-CLASS I
 - B. REDUCED PRESSURE ASSEMBLY BACKFLOW PREVENTER (SEE PARTS LIST)
 - C. COPPER FITTINGS.
 - D. COPPER UNION, 4" ABOVE GRADE, MIN.
 - E. BRASS BALL VALVE.
 - F. FINISH GRADE.
 - G. 4000 PSI CONCRETE PAD, 4" DEPTH, SLOPED 1% TO DRAIN.
 - H. PIPE SHALL BE SLEEVED THROUGH CONC. PAD WITH SCH 40 PVC SEAL PIPE.
 - I. PROVIDE PRO 5 WEED CLOTH ALONG SIDES AND BASE OF VALVE BOX, TAPE TO ALL INLET & OUTLET PIPE WITH HEAVY DUTY PLASTIC TAPE MANUFACTURED BY 3M.
 - J. 1419 BOLT DOWN FLAT LID COVER (ABS).
 - K. CARSON PRODUCTS INC, 1419-18 BODY (ABS) VALVE BOX (OR APPROVED EQUAL), EXTENSION AS NEEDED.
 - L. TYPE K COPPER PIPING.
 - M. 8" X 8" X 16" SOLID CMU SOLID BLOCK.
 - N. 3/8" WASHED PEA GRAVEL, 4" DEPTH.
 - O. FLANGE.
 - P. PVC MAIN LINE.
 - Q. UNDISTURBED OR COMPACTED SOILS.
- INSTALL AN 8" X 8" X 16" SOLID CMU BLOCK AT EACH CORNER OF THE VALVE BOX.
INSULATE (R-25 MIN.) FROM FREEZING MUST COMPLY WITH ASSE 1060-CLASS I. PROVIDE 2" CLEARANCE BETWEEN VALVE BOXES AND PVC OR COPPER PIPING.

DETAIL NO.
315